

Health & Hunger Summit

**“A glimpse inside the head
of a hospital president”**

Heather Logelin
Director, Community Benefit & Engagement
River Falls Area Hospital, part of Allina Health
May 4, 2016

Overview

- **River Falls Area Hospital, part of Allina Health**
- **The CHNA process in our region**
- **Inside the head of a hospital president**
- **Takeaways**

The background features several overlapping, semi-transparent shapes in shades of green and blue, creating a layered, organic effect. The shapes are primarily teardrop or leaf-like in form, with some pointing towards the top and others towards the bottom.

**River Falls Area
Hospital, part of Allina
Health**

Allina Health



[About Us](#) |
 [Careers](#) |
 [For Medical Professionals](#) |
 [Give / Volunteer](#) |
 [En Español](#) |
 [Employee Sign In](#)

- Locations
- Doctors & Providers
- Health, Conditions & Treatments
- Medical Services
- Customer Service
- Healthy Set Go
- My Account ▼

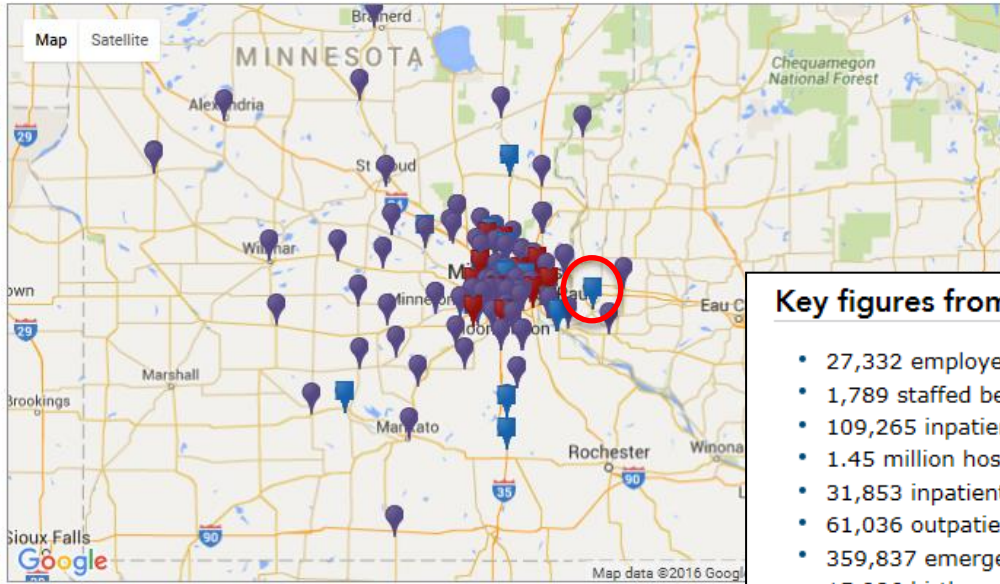
Find a location near you

Enter city and state **OR** ZIP:

- Urgent care
- Clinics

- Clinic services:**
- General practice ?
 - Maternal and fetal medicine (high risk pregnancy care) ?
 - Obstetrics and gynecology (OB/GYN) ?
 - Pediatrics ?
- [Show all clinic services](#)

- Hospitals
- Pharmacies



- Expand the menus below to see location listings**
- # Urgent care - 11 results
 - # Clinics - 195 results
 - # Hospitals - 14 results
 - # Pharmacies - 15 results

Key figures from 2015

- 27,332 employees
- 1,789 staffed beds
- 109,265 inpatient hospital admissions
- 1.45 million hospital outpatient admissions
- 31,853 inpatient surgical procedures
- 61,036 outpatient surgical procedures
- 359,837 emergency care visits
- 15,986 births
- 7 million clinic visits
- 237,934 home health visits
- 133,075 hospice visits
- 14,769 palliative care visits
- 95,000 ambulance responses
- 983,407 retail pharmacy prescriptions filled
- 193,911 oxygen/medical equipment orders



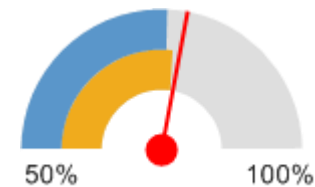
Our Mission

We serve our communities by providing exceptional care, as we prevent illness, restore health and provide comfort to all who entrust us with their care.



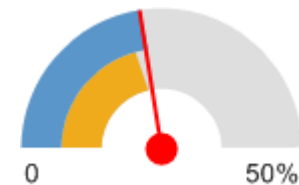
% Adults with Inadequate Fruit / Vegetable Consumption

Pierce & St. Croix Co (77.98%)
Wisconsin (76.9%)
United States (75.67%)



% Adults with no Leisure Time Physical Activity

Pierce & St. Croix Co(22.4%)
Wisconsin (21.04%)
United States (22.64%)



The background features several overlapping, curved shapes in shades of green and blue. A large, light blue shape is prominent in the center, with various shades of green overlapping it and each other. The overall effect is a modern, abstract design.

**the CHNA process in
our region**

Healthier Together: Four hospitals, three health systems, two counties



The background features several overlapping, semi-transparent shapes in shades of green and blue. The shapes are organic and flowing, creating a layered effect. The text is centered over these shapes.

**inside the head of a
hospital president**

Social determinants of health

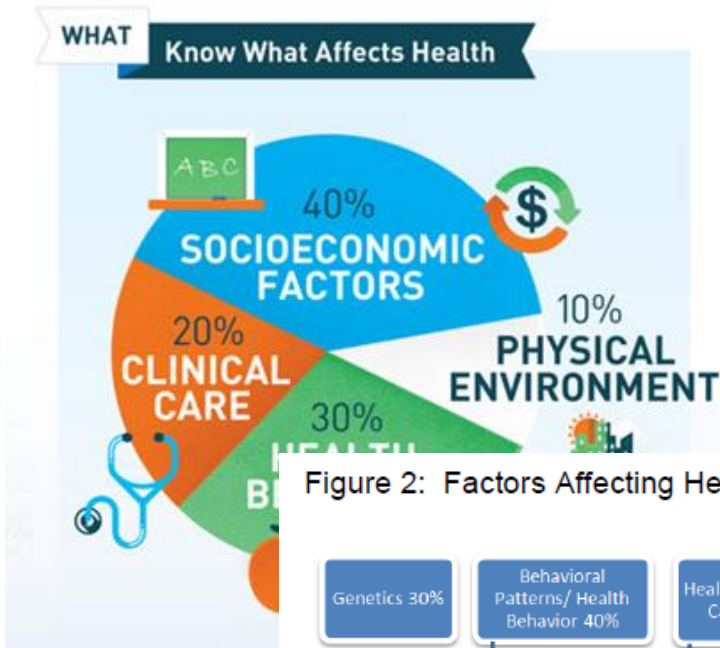


Figure 1: Proportional Contribution to Premature Death

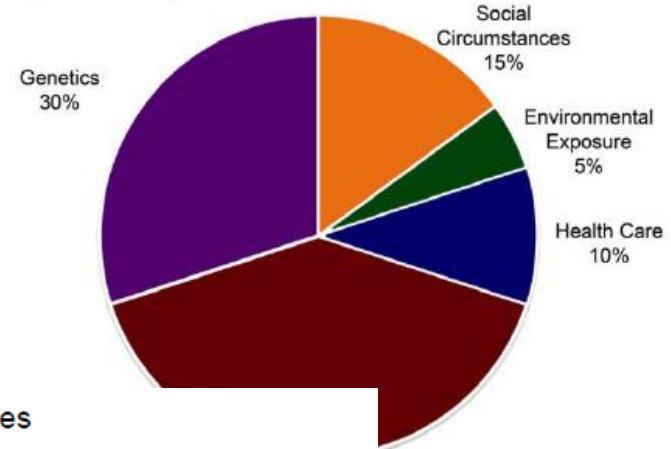
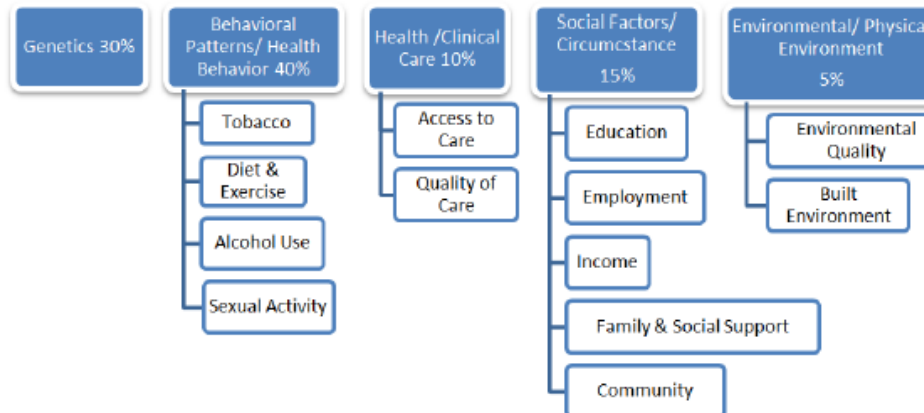


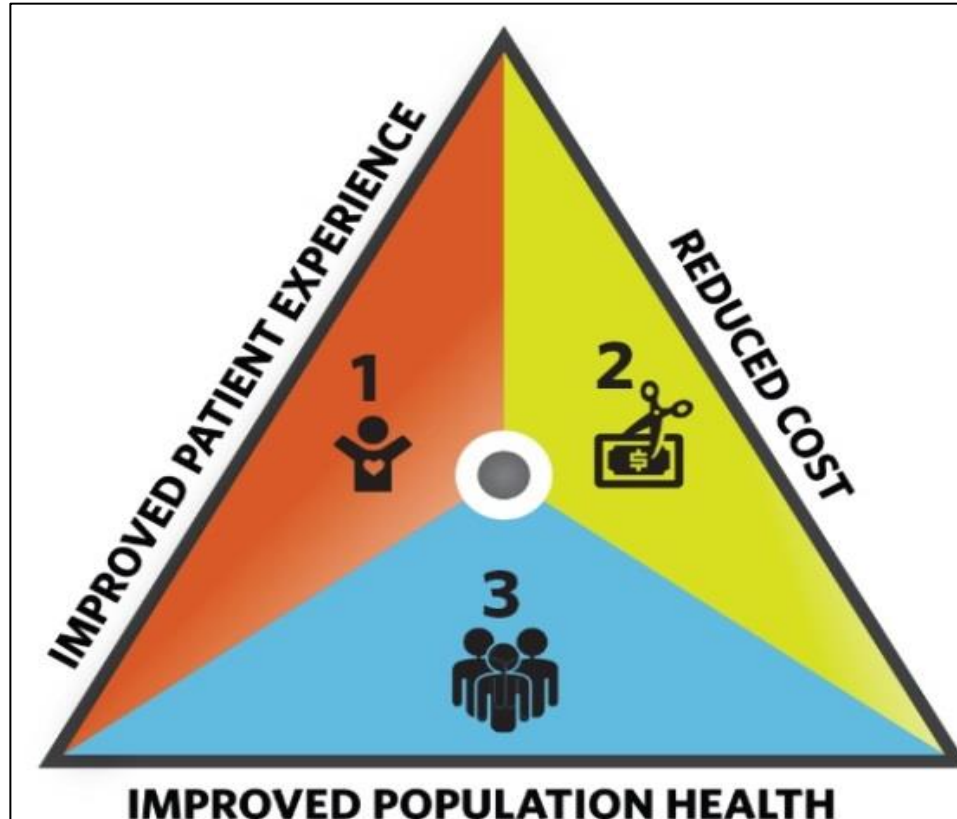
Figure 2: Factors Affecting Health Outcomes



ms
7;357:1221-8
or More Active Policy Attention to
!1(2):78-93.

County Health Rankings adapted to include genetics and McGinnis weighting of factors
<http://www.countyhealthrankings.org/our-approach>

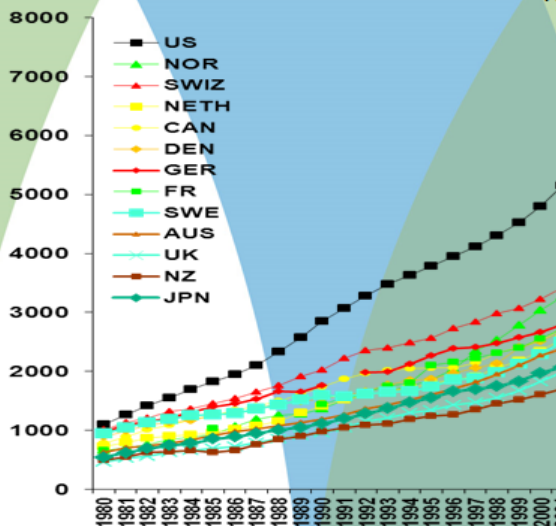
The Triple Aim: Patient Experience



The Triple Aim: Decreasing Cost

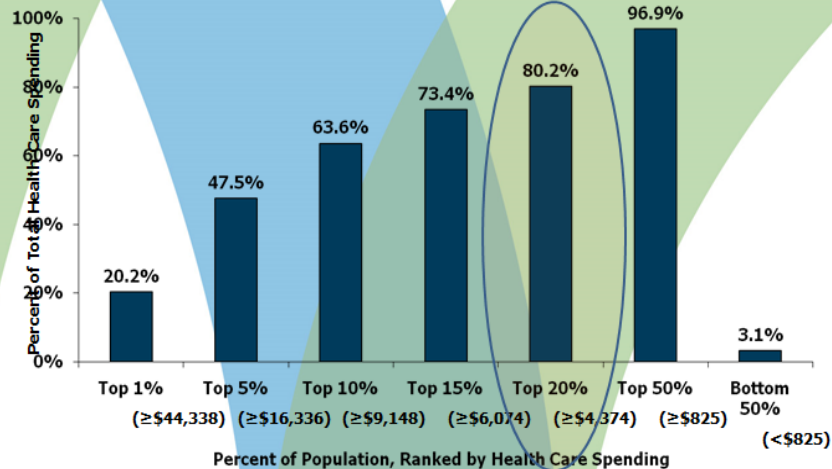
Cost: Spending too much on healthcare

“Obamacare will ... ruin the best healthcare system in the world.”
 - House Speaker John Boehner, 07/01/12



Source: The Commonwealth Fund, May 2012

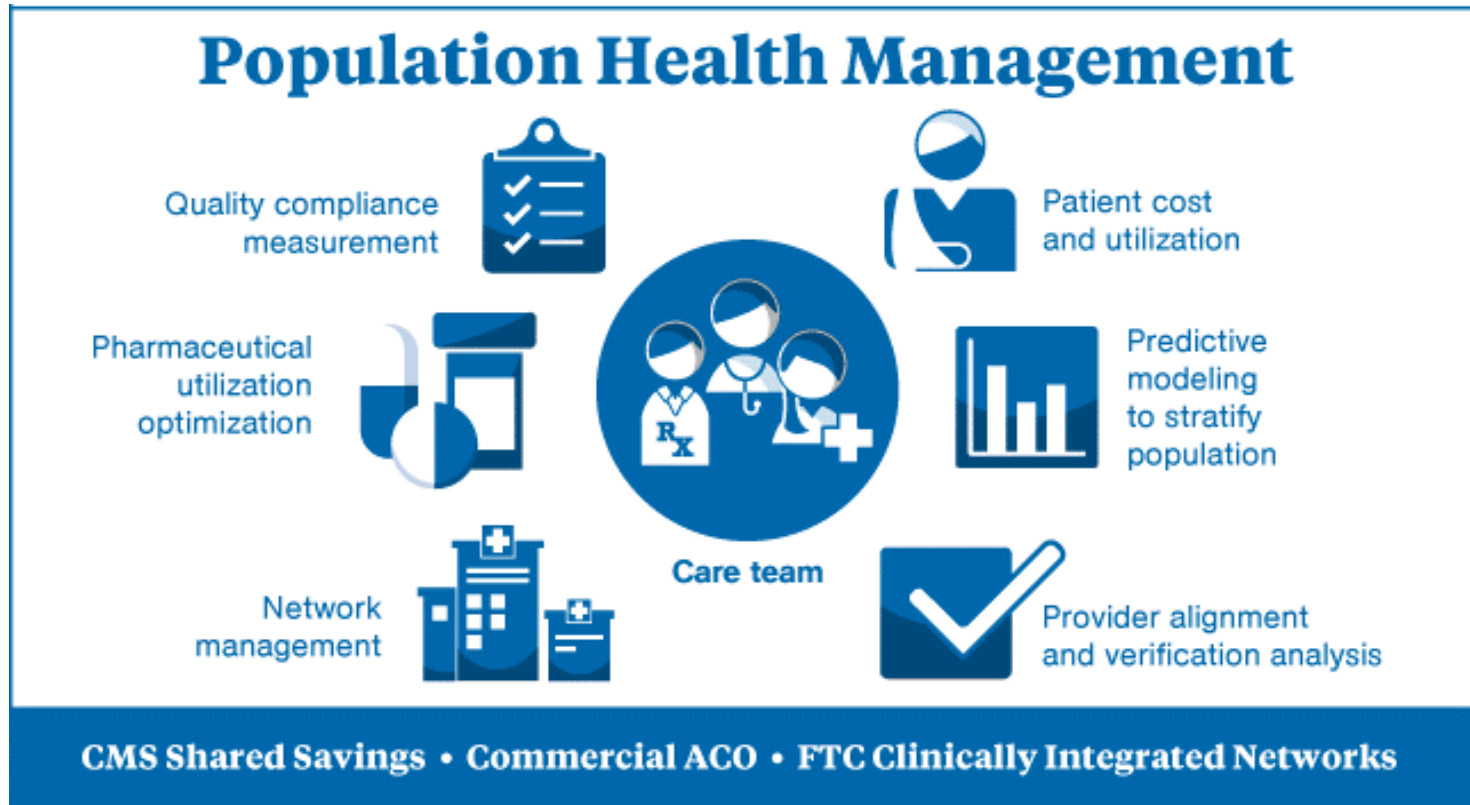
Cost: Health Care Spending in the U.S.



Note: Dollar amounts in parentheses are the annual expenses per person in each percentile. Population is the civilian noninstitutionalized population, including those without any health care spending. Health care spending is total payments from all sources (including direct payments from individuals, private insurance, Medicare, Medicaid, and miscellaneous other sources) to hospitals, physicians, other providers (including dental care), and pharmacies; health insurance premiums are not included.

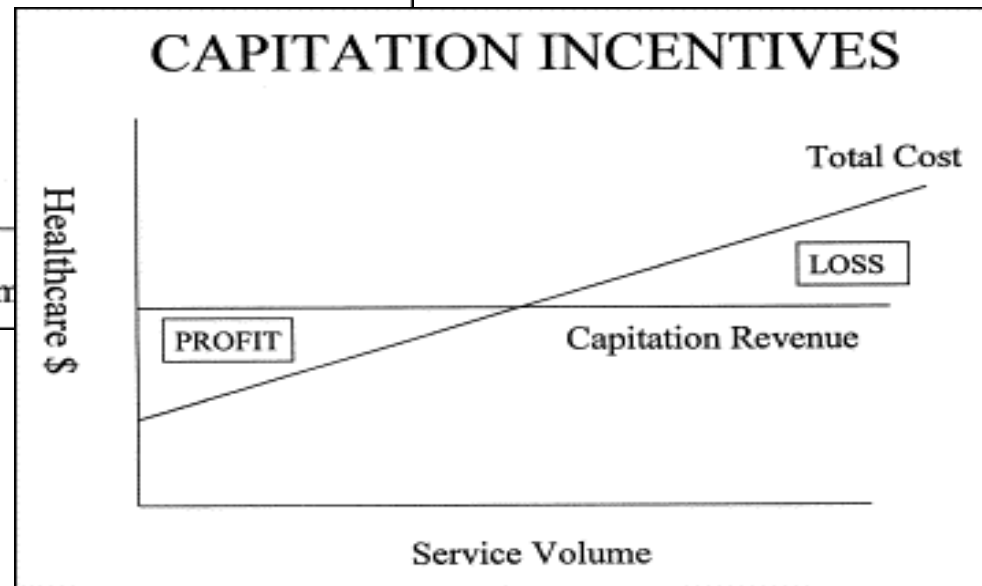
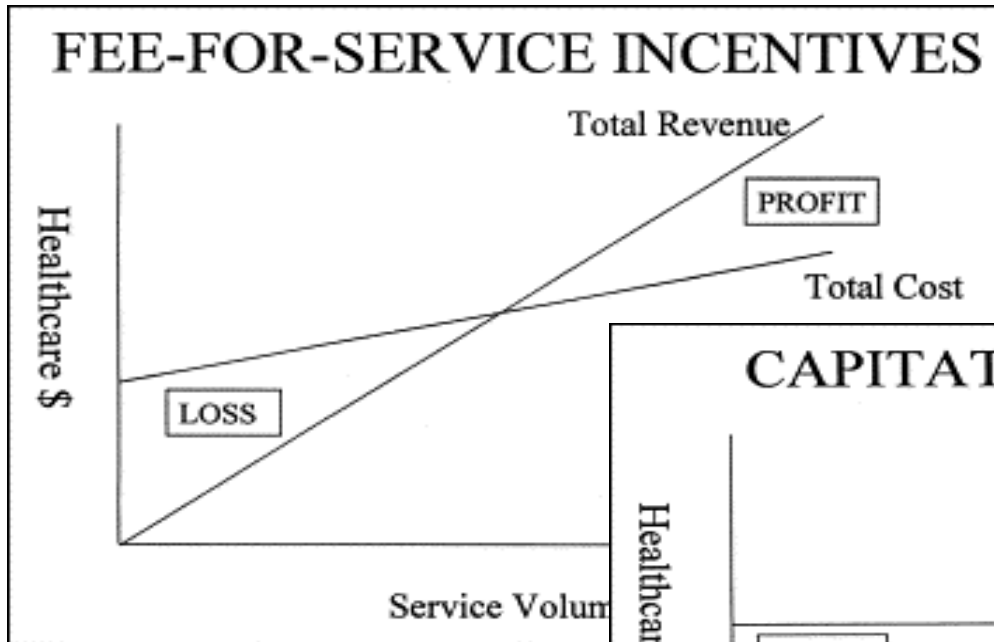
Source: Kaiser Family Foundation calculations using data from U.S. Department of Health and Human Services, Agency for Healthcare Research and Quality, Medical Expenditure Panel Survey (MEPS), 2008.

The Triple Aim: Population Health

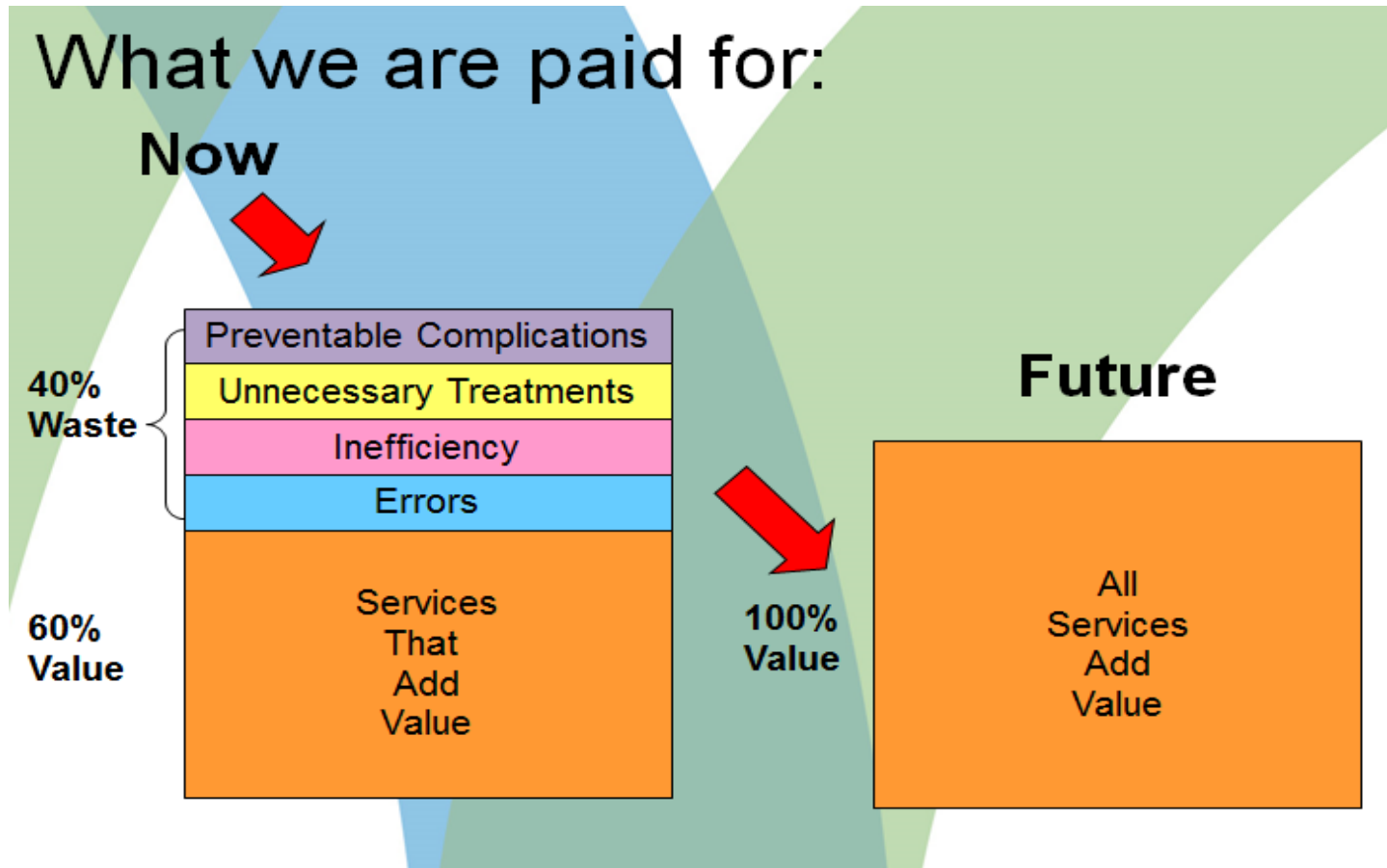


<http://www.mckesson.com/population-health-management/population-health/prepare-for-change/>

Volume to Value: Reimbursement



Volume to Value: Eliminating Waste





takeaways

Takeaways

A win-win proposal will:

- align with the CHNA
- be reportable as community benefit
- engage employees
- generate some good PR

You want to leave the hospital president thinking, “It’s the right thing to do for the community, for our patients, for our employees and for the bottom line.”

Takeaways



riverfallsjournal.com

THURSDAY, NOVEMBER 21, 2013 **B3**

A TRUCKLOAD OF HELP

Allina Health contributed \$2,500 to the United Way St. Croix Valley's Food Resource Center. The money bought a truckload of food for distribution to food shelves throughout Pierce and St. Croix counties, including the River Falls Community Food Pantry. The contribution was funded through Allina Health's charitable contributions program, which provides support to organizations working to meet the needs of local communities. It was recommended by a committee of River Falls Area Hospital employees. Several then volunteered to help sort and distribute the food purchased. Shown volunteering at the Food Resource Center were, from left in front: Beth Nelson and Kristen Novak, Allina Health; back, from left: Ken Osowski, First National Bank of River Falls; John Coughlin, United Way; Tracy Dierks Smith and Tom Dusek, Allina Health. (Submitted photo)



Takeaways

Quality early childhood programs help prevent adult chronic disease, research shows

By [Wen Huang](#)
MARCH 27, 2014

High-quality early childhood development programs with health care and nutritional components can help prevent or delay the onset of adult chronic disease, according to a new study by Nobel laureate economist [James Heckman](#) and researchers at the University of Chicago, University College London and the Frank Porter Graham Child Development Institute at the University of North Carolina.

Based on more than three decades of data from the landmark Abecedarian early childhood program in North Carolina, the study shows that children who participated in the intervention combining early education with early health screenings and nutrition had much lower levels of hypertension, metabolic syndrome and obesity in their mid-30s than a control group that did not participate in early learning program. The results are published in the March 28 issue of the journal *Science*.



VIDEO: Prof. James Heckman 'Early Health & Education Chronic Disease'

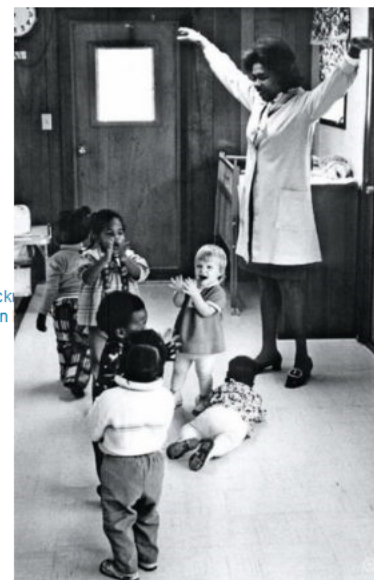
"Prior to this research, we had indications that quality early childhood development programs helped produce better health later in life," said Heckman. "Abecedarian shows that investing in early learning programs that offer health components can boost education, health and economic outcomes. It also offers a different way to fight costly adult chronic diseases: Investing early in the development of children to build the knowledge and self-regulation necessary to prevent chronic disease and help them lead healthy, productive lives."

The [Carolina Abecedarian Project](#), one of the oldest and most cited early childhood programs, was designed to test whether a stimulating early childhood environment could prevent developmental delays among disadvantaged children. The study involved 111 children from low-income families, born in or near Chapel Hill, N.C. between 1972 and 1977. It also included a health care and nutritional component. Children received two meals and an afternoon snack at an early learning center and were offered daily health screenings and periodic medical checkups. Participants who received this intervention, as well as those in the control group who did not, have been followed for

206 171 2047

Share Tweet share

PHOTOS



The Carolina Abecedarian Project is one of the oldest and most cited early childhood programs. Studying 111 children from low-income families, born between 1972 and 1977, it was designed to test whether a high-quality early childhood



**questions?
comments?**



thank you!

heather.logelin@allina.com

(715) 307-6001